

# JUST PIPING, JUST FITTING

**A Comprehensive Integrated Solution For Piping Systems**





FD1011

Double Flanged Piece



FD1021

Flanged spigot piece



FD1022

Flanged spigot piece



FD1031

Flanged socket piece



FD1102

All flanged tee



FD1103

Tee, Ductile Iron Pipe fittings  
ISO 2531, PN16



FD1111

All flanged 45 angle branch



FD1121

All flanged Y tee



FD1041

Double flange 11.25° bend



FD1051

Double flange 22.5° bend



FD1061

Double flange 45° bend



FD1062

Double-flange-45°  
bend-DN1000



FD1131

All flanged radial tee



FD1141

All flanged level invert tee



FD1151

concentric Taper(Reducer)



FD1152

concentric Taper(Reducer)



FD1071

Double flange 90° bend



FD1072

Double flange 90° bend



FD1073

Double flange 90° bend



FD1081

Double flange 90° long  
radius bend



FD1161

flat taper(Reducer)



FD1171

Double Flanged Pipe with puddle  
Ductile Iron Pipe fittings  
ISO 2531, PN16



FD1171

Puddle flange piece



FD1172

Flange piece with puddle



FD1082

Double flange 90° long  
radius bend



FD1091

Double flange 90° duckfoot  
bend



FD1092

Double flange 90° duckfoot  
bend



FD1101

All flanged tee



FD1173

Flange piece with puddle



FD1181

Flange piece with puddle



FD1191

Spigot piece with puddle



FD1201

All flanged cross



FD1211

Double flanged hatchboxes



FD1221

Flange bellmouth



FD1231

Split puddle flange



FD1241

Blind flange



FD1351

Off-sets



FD1361

All socket tee



FD1362

All socket tee



FD1363

All socket tee



FD1242

Blind flange, overDN350



FD1251

Slip on flange, ISO7005-2



FD1261

Uni-flange



FD1271

Collar



FD1371

Socket spigot tee with flanged branch



FD1372

Socket spigot tee with flanged branch



FD1381

Double socket tee with flanged branch



FD1382

Double socket tee with flanged branch



FD1281

Double spigot pipe



FD1291

Socket Spiget piece



FD1301

Double socket 11.25° bend



FD1311

Double socket 22.5° bend



FD1391

Double socket tee with spigot branch



FD1401

All socket 45 angle branch



FD1411

Double socket level invert tee



FD1421

Taper, (Reducer)



FD1321

Double socket 45° bend



FD1331

Double socket 90° bend



FD1332

Double socket 90° bend



FD1341

Double socket 90° long radius bend



FD1431

All socket cross



FD1441

Double socket 90° duckfoot bend



FD1451

Pipe block



FD1452

Pipe block

Pipe Fittings



FD1461

Bend with outlet



FD1471

Cap



FD1481

Plug



FD1491

Self restrained lock for DI pipe



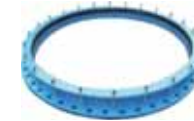
JA011

Flange adaptor, new flange type designed, dedicated for Steel pipe



JA012

Flanger adaptor, dedicated to Ductile Iron pipe



JA013

Flange adaptor, large Diameter, for DN2000 DI



JA014

Flange adaptor, large Diameter, black coating

Fittings For Pvc



FD2011

Collar for PVC pipe



FD2021

Bend for pvc pipe



FD2031

Flange socket for PVC pipe



FD2041

Double sockets tee with thread branch for PVC pipe



JA015

flange adaptor, new flange type designed, dedicated for Steel pipe, back side



JA021

Universal flange adaptor, wide range OD, type II



JA022

Universal flange adaptor, wide range OD



JA031

Convert flange, reducing flange, ISO 2531, BS EN545,598



JA032

Convert flange, reducing flange, ISO 2531, BS EN545,598



JA041

Uni-flange



JA051

QUICK JOINT FOR PE PIPE (WITH BRASS FIXING RING)



JA061

QUICK JOINT FOR PVC PIPES

Loosing Flange Pipe Fittings



FD3011

All loose flange tee



FD3021

Elbow, with double loose flange



FD3031

loose flanged taper



FD3041

loose flange, FBE coating



JA071

Flange adaptor -Restrained for HDPE



JA072

Flange adaptor -Restrained for HDPE, OD 160



JC011

Coupling, dedicated to DI pipe, ISO2531, EN545



JC012

Dedicated coupling, large Diameter, for DN2000 Ductile iron pipe

Coupling



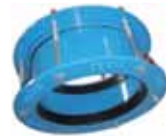
JC013

coupling,large Diameter,DN2000



JC021

Flexible coupling, dedicated to Ductile Iron pipe, ISO 2531,EN545,598.



JC022

Flexible coupling, dedicated to Ductile Iron pipe, DN600, ISO 2531,EN545,598



JC031

Universal coupling,for wide range OD



JE021

Flanged\_Rubber expansion\_joint\_PN



JE031

Screwed Rubber expansion joint



JE041

Rubber Bellows, Dn800



JE042

Rubber Bellows



JC032

Universal coupling,for wide range OD 455-474mm



JC041

Step coupling



JC042

Stepped coupling,PE-PVC,DN250x280



JC051

Coupling for steel pipe



JR011

DCI Jaw Stainless Steel Band Repair Clamps



JR012

repair clamps,stainless steel



JR021

Full Stainless Steel Repair Clamps



JR031

GR-Grip Ring Coupling



JC061

Gibault joint, for PVC, PE, AC sized pipes DN63-315mm



JC062

Gibault joint, for PVC, PE, AC sized pipes OD 63mm-315mm



JC071

HDPE-PVC coupling



JC072

Restained coupling, for HDPE



JR041

MF-Multiflex coupling



JR051

RCD-Double Lock Coupling



JR061

RCH-Repair clamp hinge coupling



JR071

Minitype Repair Clamps

Dismantling Joint



JD011

Dismantling Joint DN100



JD012

Dismantling Joint, PN flange drilling.



JD013

Dismantling Joint DN1800

Rubber Expansion Joint



JE011

Rubber Bellows Expansion Joint, AWWA,ANSI Flange



JR081

clamps with tapping hole



JR091

Tapping Sleeve



JR101

Three parties clamps



JR111

Adjustable clamps

# SF 02 COUPLINGS, ADAPTORS & JOINTS



## Saddle



JS011

Saddle, Clamp, for PVC



JS021

Pipe Saddle



JS031

Tapping Saddle Clamp



JS041

Saddle with flange outlet



V01023

FLANGED NON-RISING STEM GATE VALVE (Z45T)



V01031

FLANGED NON RISING STEM GEAR BOX GATE VALVE (Z545T)



V01041

FLANGED RISING STEM GEAR BOX GATE VALVE (Z541T)



V01051

FLANGED RISING STEM GATE VALVE (Z41T)

## SF 03 VALVE



## Gate Valve



V01011

FLANGED RESILIENT SEAT NON-RISING STEM GATE VALVE (Z45X)



V01012

FLANGED RESILIENT SEAT NON-RISING STEM GATE VALVE (Z45X)



V01013

FLANGED RESILIENT SEAT NON-RISING STEM GATE VALVE (Z45X)



V01014

FLANGED RESILIENT SEAT NON-RISING STEM GATE VALVE (Z45X)



V02012

FLANGED SWING CHECK VALVE (H44T)



V02021

TILTING NON RETURN VALVE (Hx47T)



V02031

WAFFER TYPE DOUBLE DISC SWING CHECK VALVE (H76X)



V02041

FLANGE END LIFT CHECK VALVE (H41H)



V01015

FLANGED NON-RISING STEM GATE VALVE (Z45X)



V01016

FLANGED NON-RISING STEM GATE VALVE (Z45X)



V01021

FLANGED NON-RISING STEM GATE VALVE (Z45T)



V01022

FLANGED NON-RISING STEM GATE VALVE (Z45T)



V02051

FLAP VALVE (H49T)



V02061

FLAP VALVE (H49X)



V02071

RUBBER FLAP CHECK VALVE (H44X)



V02081

MICRO RESISTANCE SLOW CLOSING CHECK VALVE (HH44X)

## Check Valve



V02011

FLANGED SWING CHECK VALVE (H44T)



V01061

FLANGED RISING STEM GATE VALVE (Z41T)



V01062

FLANGED RISING STEM GATE VALVE (Z41T)



V01071

FLANGED RISING STEM GATE VALVE (Z41X)

**Butterfly Valve**

**Ball Valve**

**Strainer**

**Angle Valve**



V02091

SILENT CHECK VALVE (H42T, H42X)



V02101

SAVING ENERGY ERADICATING NOISY CHECK VALVE (H41X)



V03011

WAFER TYPE BUTTERFLY VALVE (D71X)



V03021

WAFER TYPE BUTTERFLY VALVE (D371X)



V05021

FLANGE END GLOBE VALVE J41H-16



V06011

FLANGE END BALL VALVE



V07011

FLANGE END STRAINERE



V08011

HOUSE CONNECTION VALVE



V03031

FLANGED BUTTERFLY VALVE (D343X)



V03041

Flexible coupling, dedicated to Ductile Iron pipe, ISO 2531, EN545, 598



V03051

WAFER TYPE ELECTRIC-DRIVEN BUTTERFLY VALVE (D971X)



V03061

FLANGE TYPE ELECTRIC-DRIVEN BUTTERFLY VALVE (D941X)

SF 04 RUBBER GASKET



V03071

FLANGE TYPE MOTORIZED DRIVEN BUTTERFLY VALVE (D943X)



V04011

KP AIR VALVE



V04021

QUICK AIR VALVE (P41X)



V04031

SINGLE ORIFICE AIR EXHAUST VALVE (P1(QB1))



R01011

Rubber gasket for pipe flange



R01012

Rubber gasket for pipe flange



R01021

Flange gasket



R02011

Rubber gaskets for DI socket Tyton joint, ISO 2531, EN545, EN598

**Air Valve**

**Globe Valve**



V04041

DOUBLE ORIFICE AIR VALVE



V04051

CARX EXHAUST VALVE



V04061

SCAR SEWAGE COMPOSITE AIR EXHAUST VALVE



V05011

FLANGE END ANGLE PATTERN GLOBE VALVE J44H-16



R02031

Wide-Range-Gasket



R02051

Anti-Thrust-Gasket



R02061

ISO2531-Gasket-for Ductile-Iron-Pipe



R02071

Sit-on-Plus-Gasket

# SF 05 BOLT & NUT



B01011

Hexagon Head Bolts



B01021

T-head Bolts



B01031

Stud Bolts



B01041

Threaded Rods



B02011

Hexagon Nuts



B03011

Plain Washers

# SF 06 CARBON STEEL PIPE & FITTINGS



## Flange



FS3011

Flange



FS3012

Large diameter flanges



FS3021

Plate flange



FS3031

Flange, weld neck flanges



FS3032

Weld neck flange



FS3041

Flange, Threaded flange



FS3051

Flange, blind flange



FS3061

Slip on flanges

## Pipe Fittings



FS1011

180° bend



FS1021

bend



FS1031

tee



FS1041

Reducer



FS1051

Reducer



FS1061

cap



FS1071

Cross



FS2011

Carbon Steel Pipe Fittings



## SF 07 MANHOLE COVER



M001

Cast Iron Manhole Cover and Frames-C250



M002

Ductile iron manhole cover



M003

EN124 Manhole cover



M004

Round Manhole cover,locker, EN124



M005

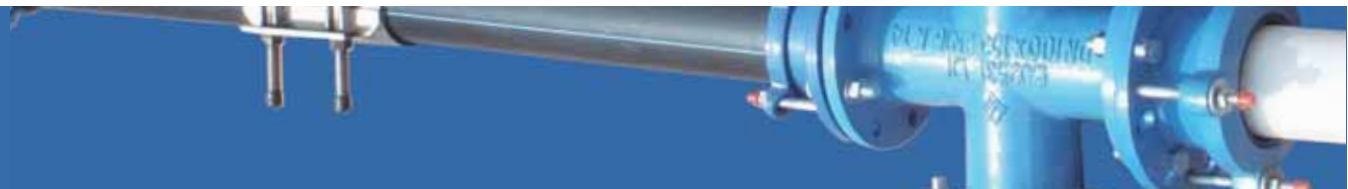
Manhole Cover And Frame



M006

Square grid,EN124

## SF 08 STEEL PIPES



PS1011 seamless steel pipe, ASTM A106



PS2011 Boiler pipe



PS3011 API 5L, Line pipe



PS5011 API 5CT OCTG



PS4011 Structural steel pipe



PD1001  
ISO2531 Ductile iron pipe



PD1002  
Ductile iron pipes with cement lined and zinc coating class k9



PD1005  
ISO2531/EN545 K9/K12/K14 Ductile iron pipe



PD1006  
Push on tyton joint pipe, epoxy coating



PD1003  
Ductile iron tyton pipe



PD1004  
Ductile iron pipe class k9  
DN80-DN2000mm



PD2002  
Ductile cast iron pipe  
PN10/PN16/PN25/PN40



PD2001  
Ductile iron flange pipe, welded flange pipes,  
ISO2531, EN545, EN598

# JILIN SENFENG PIPE CO., LTD.

Fukang Rd., Panshi City, Jilin Province, China

## General Manager Office

Tel +86 432 6561 2291

+86 137 0444 2291

Fax +86 432 6561 2291

E-mail [rocky@jilinpipe.com](mailto:rocky@jilinpipe.com)

## Export Department

Tel +86 186 0535 6016

Fax +86 432 6561 1999

E-mail [angus@jilinpipe.com](mailto:angus@jilinpipe.com)  
[angus.shenzhen@gmail.com](mailto:angus.shenzhen@gmail.com)

## Technology & Services Office

Tel +86 432 6561 1888

+86 186 4327 2271

Fax +86 432 6561 1888

E-mail [info@jilinpipe.com](mailto:info@jilinpipe.com)

